

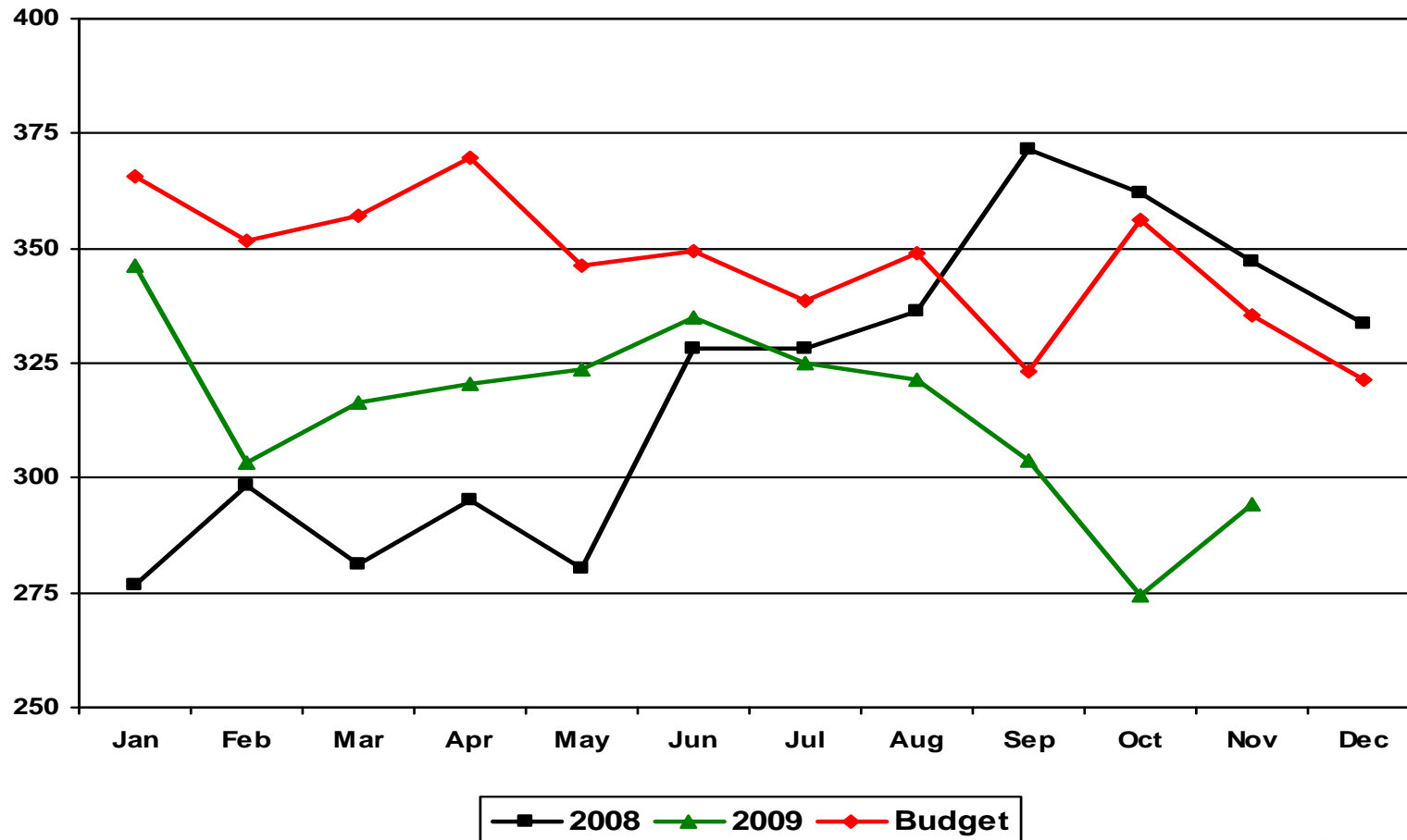


# Financial Report

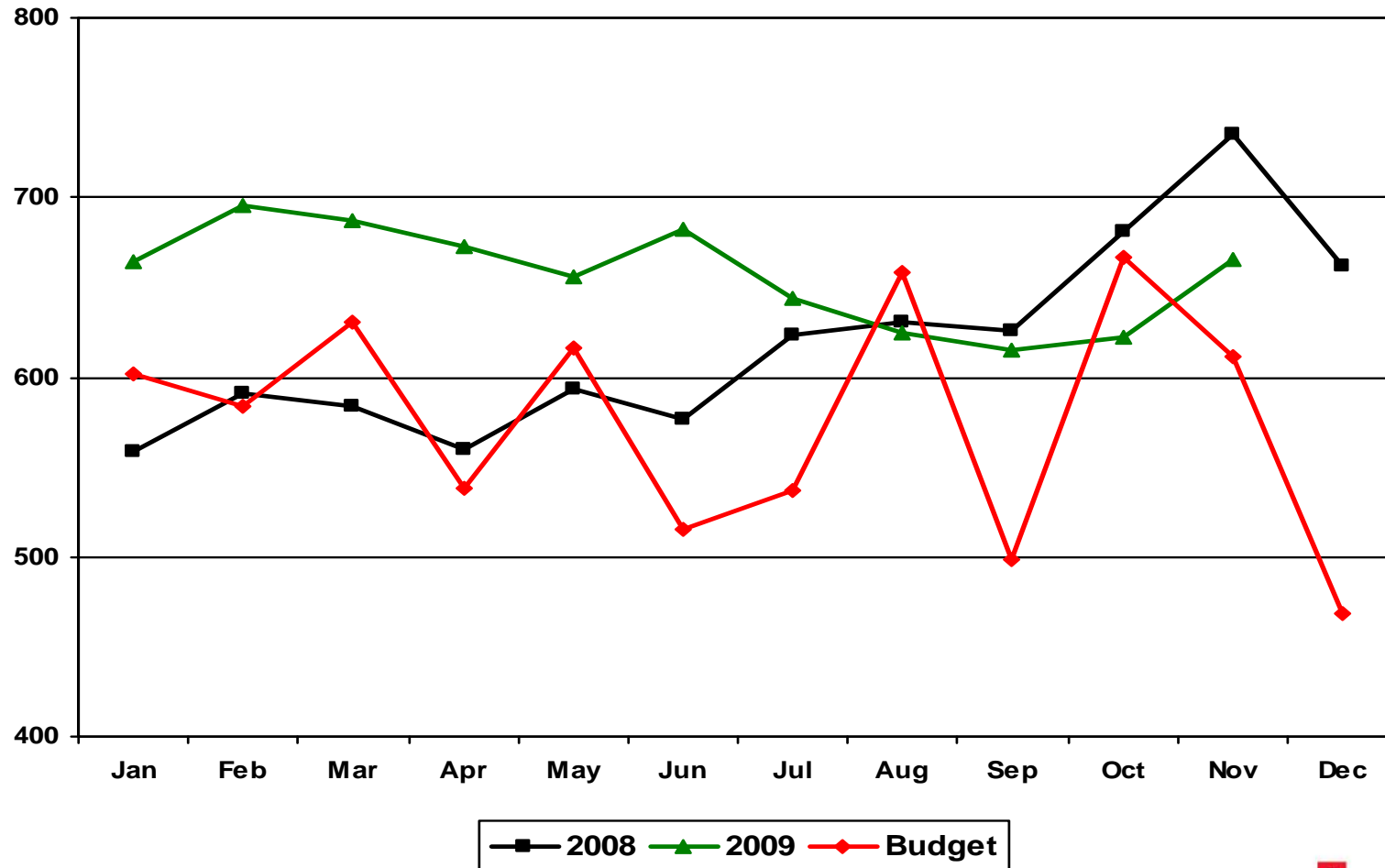
November 2009



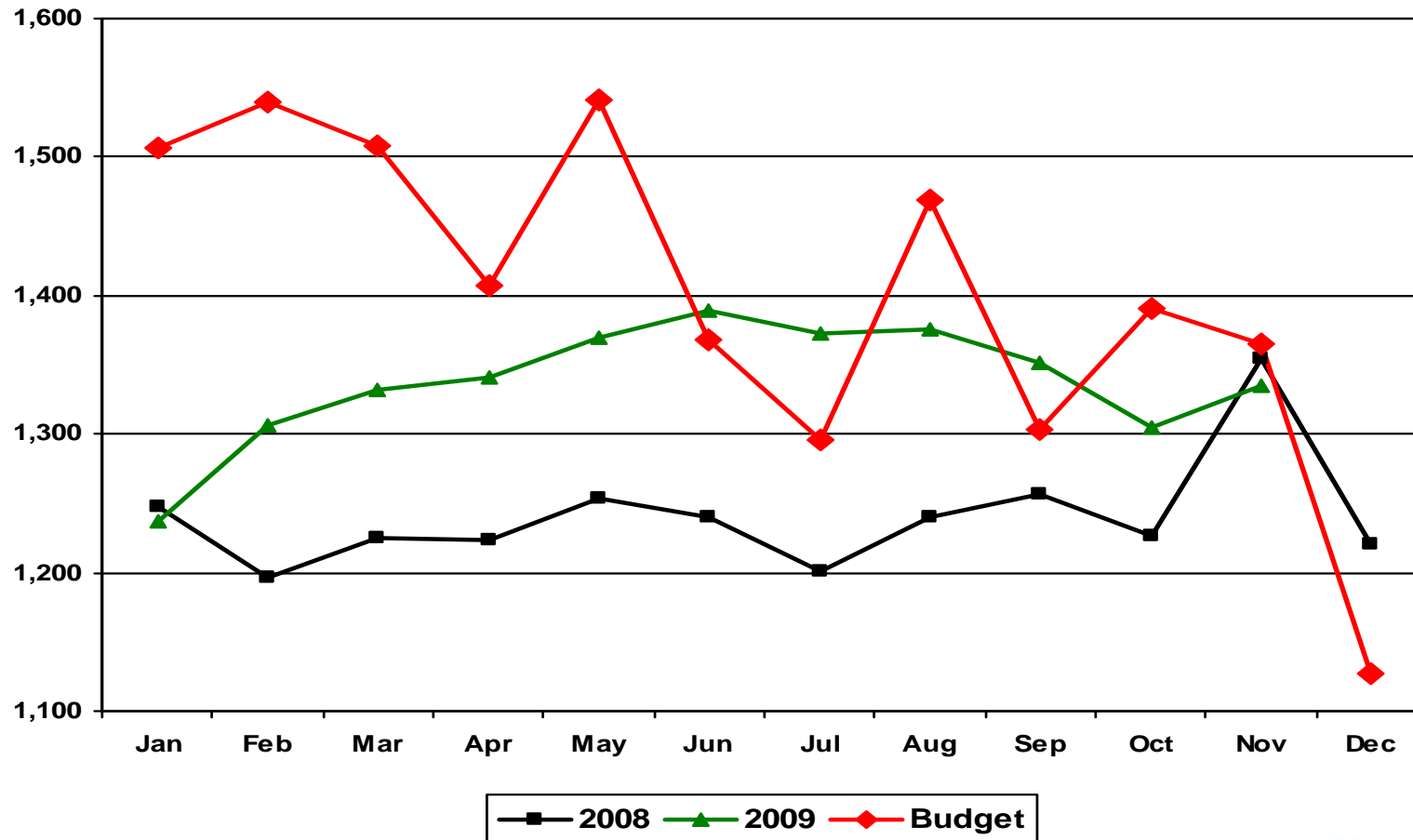
# Average Emergency Visits Per Day



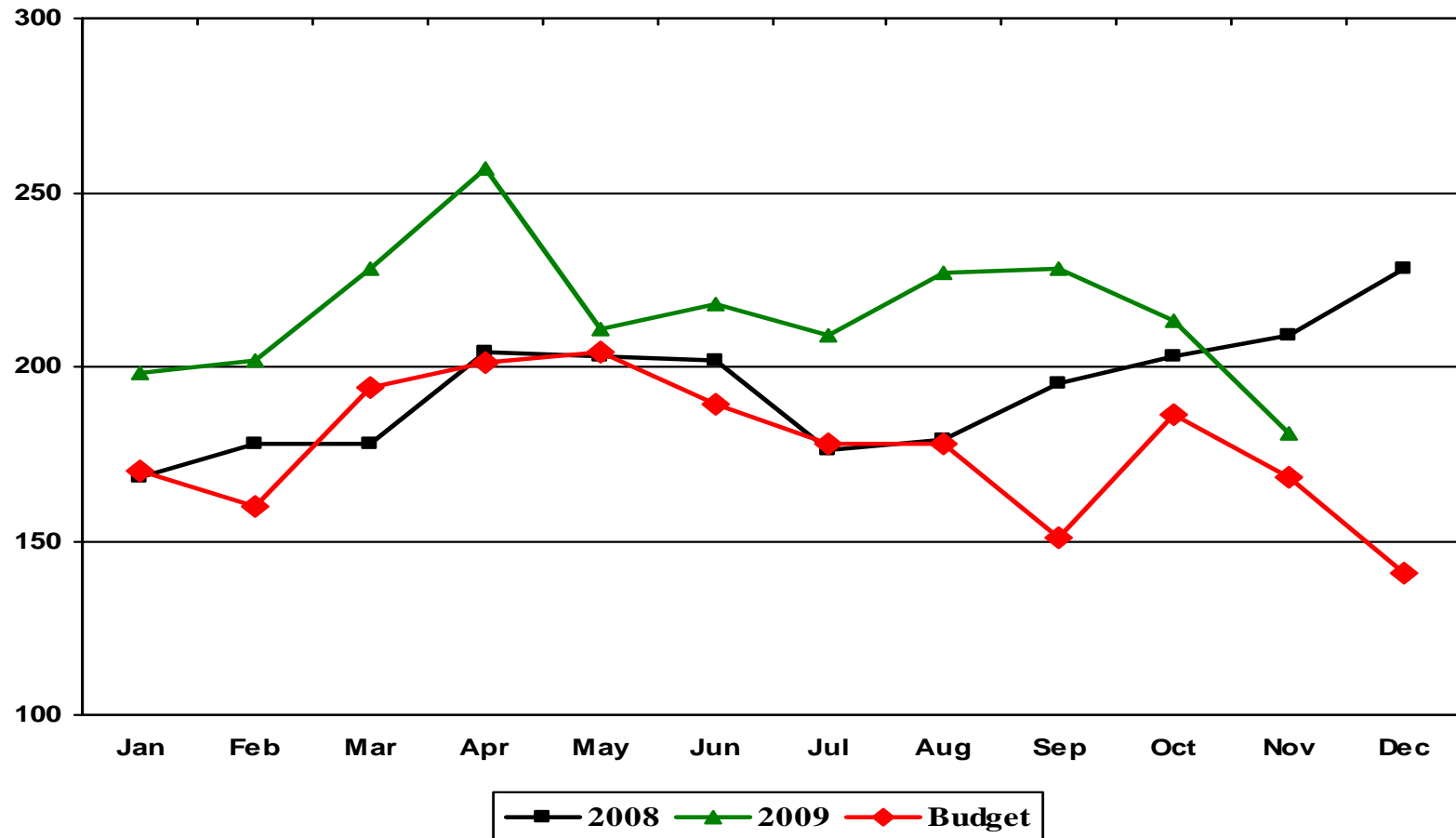
# Average Neighborhood Clinic Visits Per Day



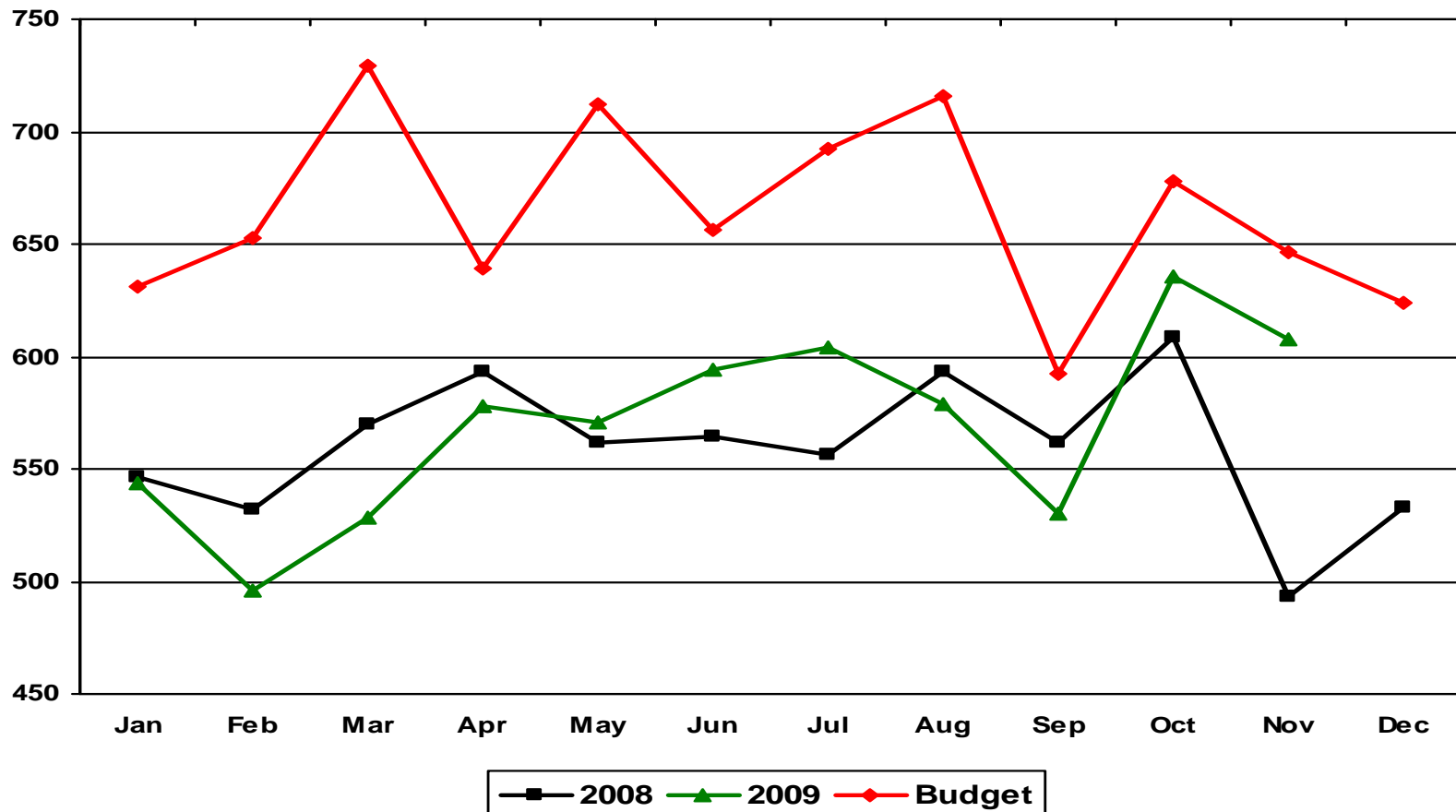
# Average On-Site Clinic Visits Per Day



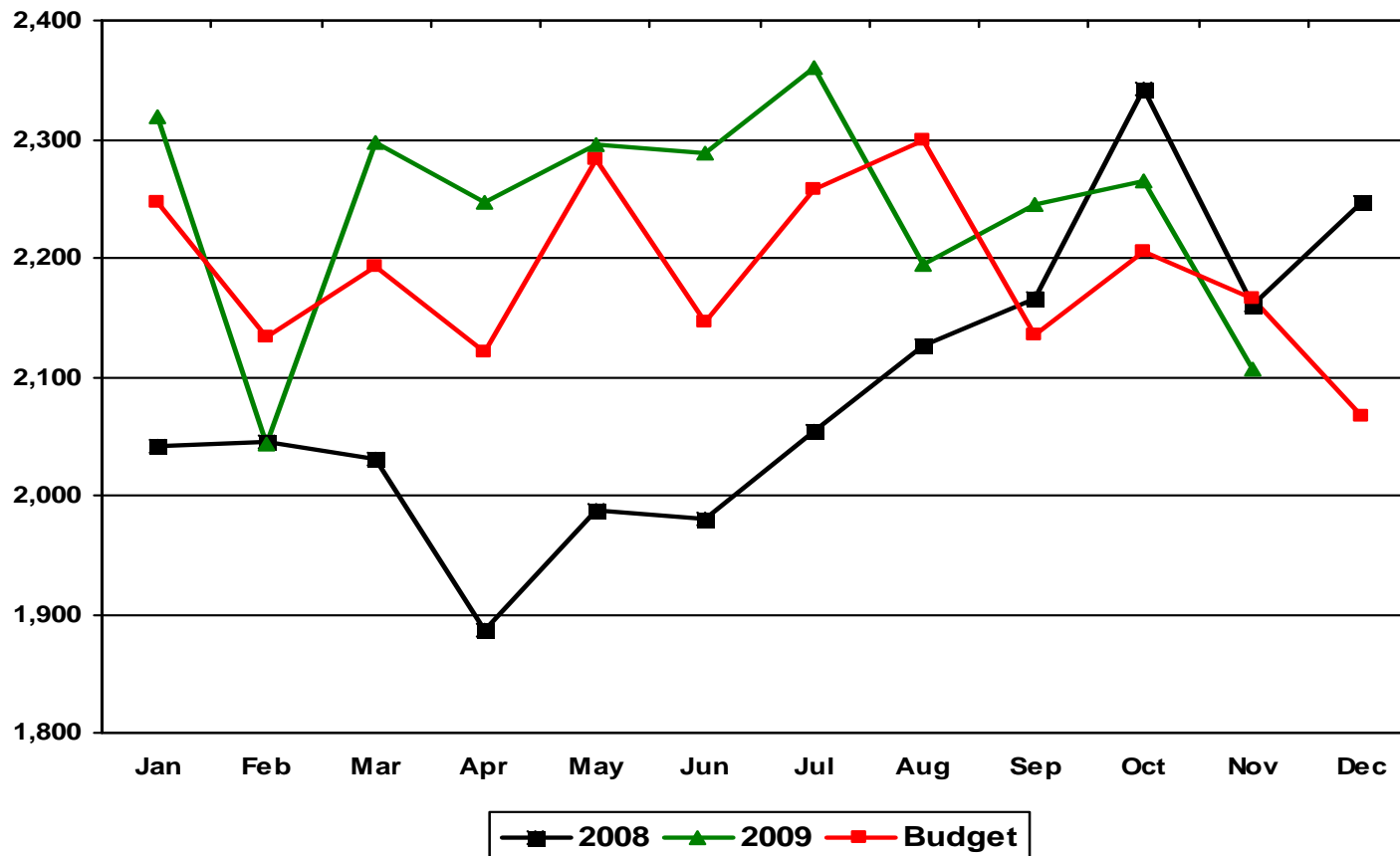
# Outpatient Surgeries



# Inpatient Surgeries



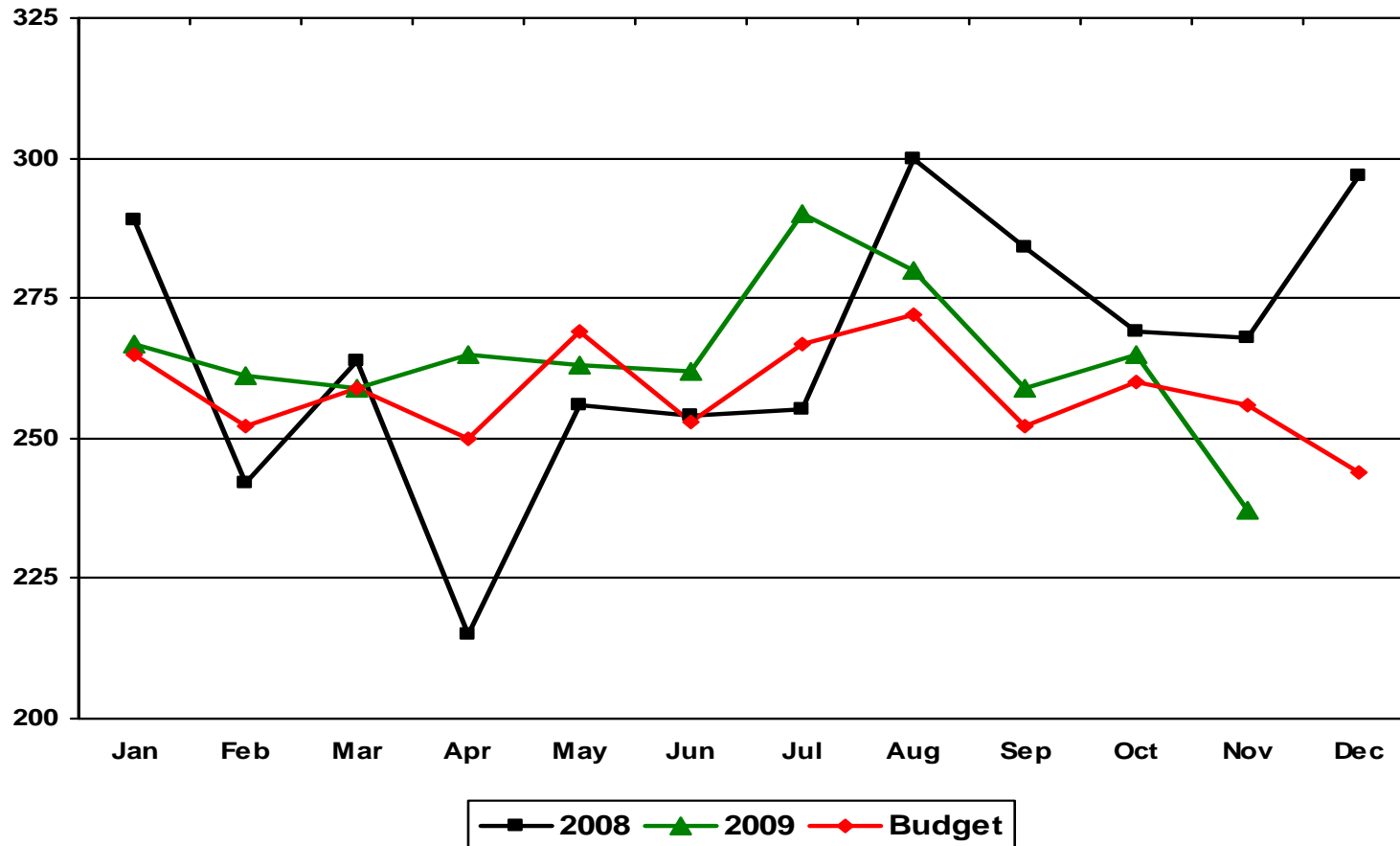
# Total Discharges



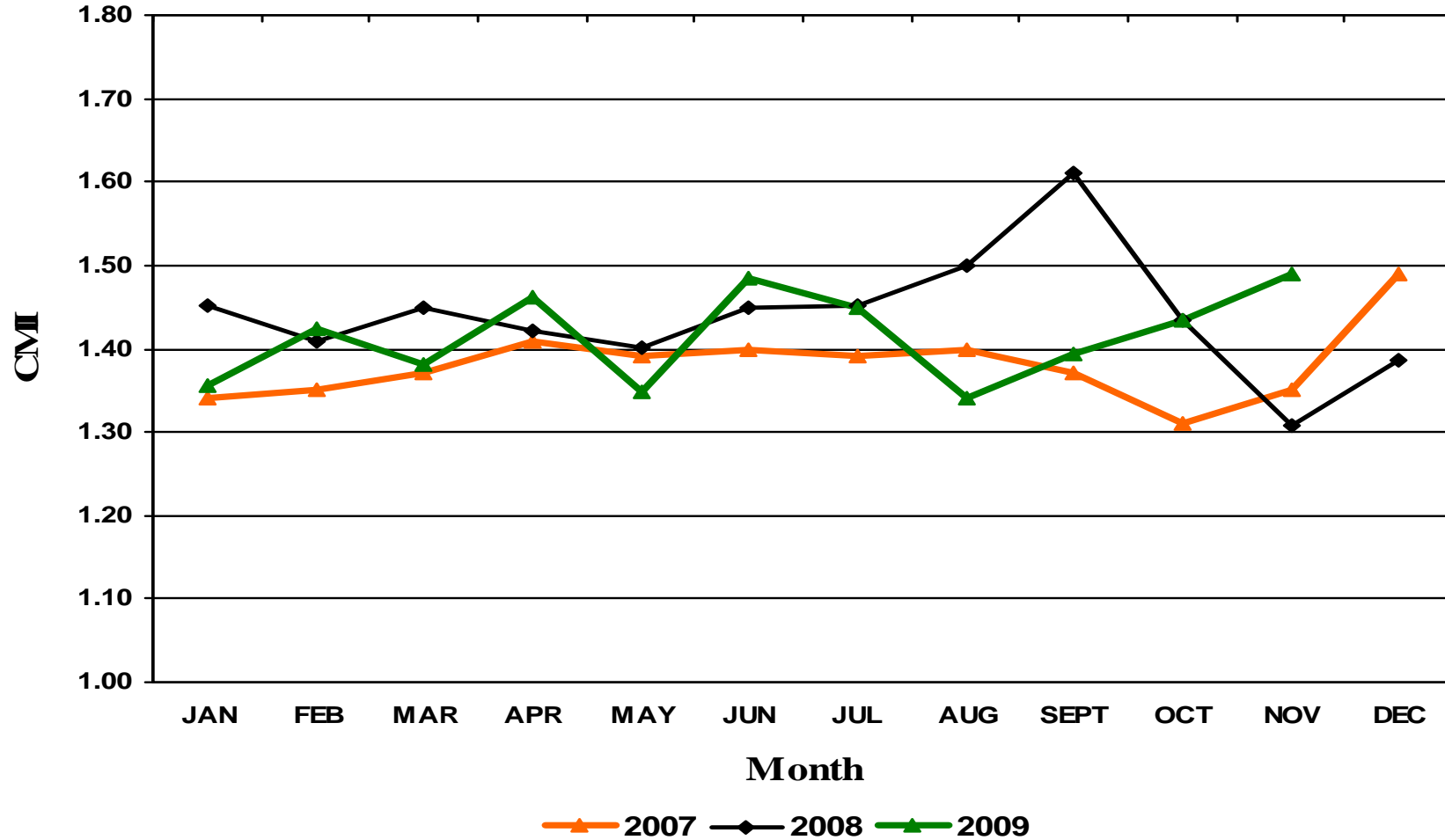
Does not include Normal Newborn



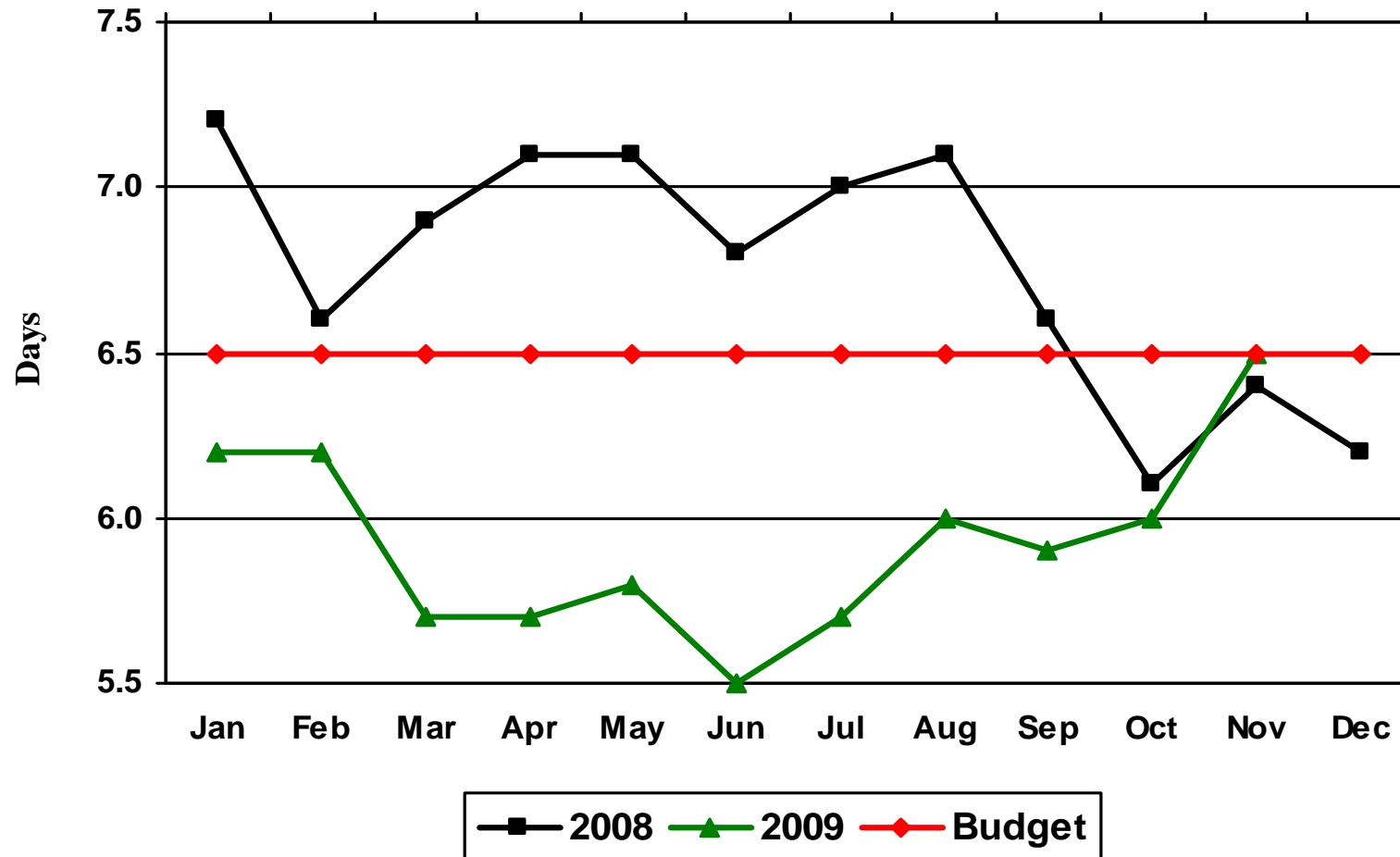
# Deliveries / Live Births



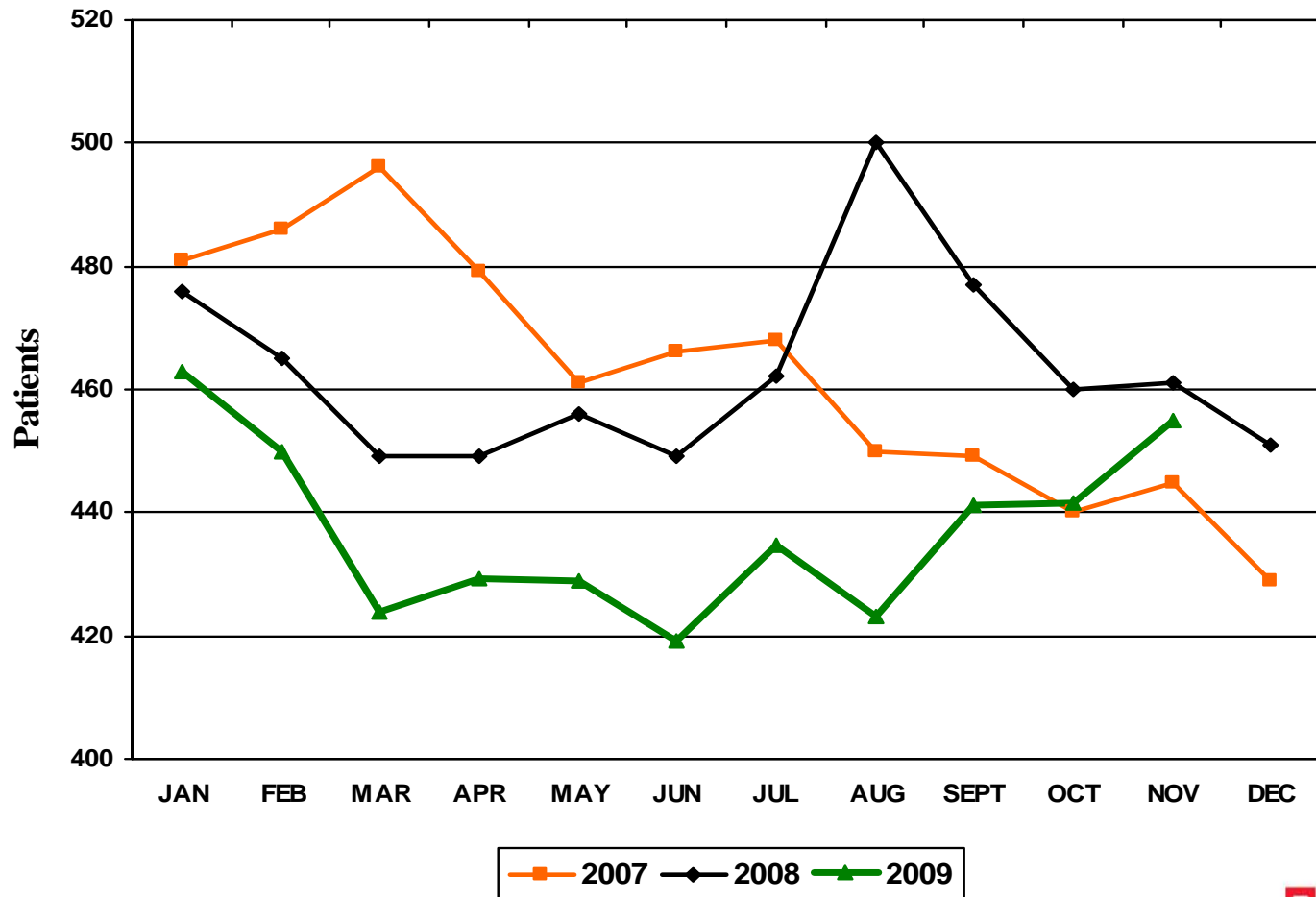
# Overall Case Mix Index



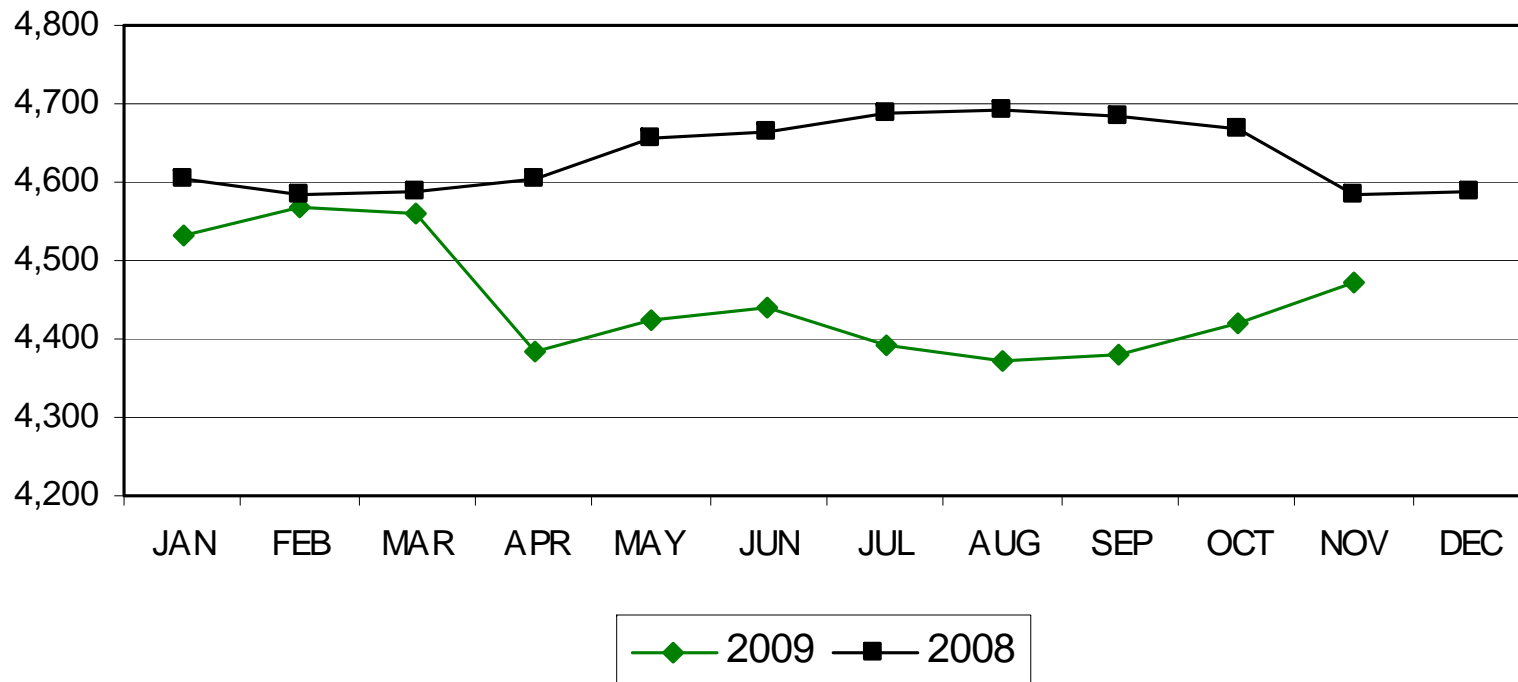
# Average Length of Stay



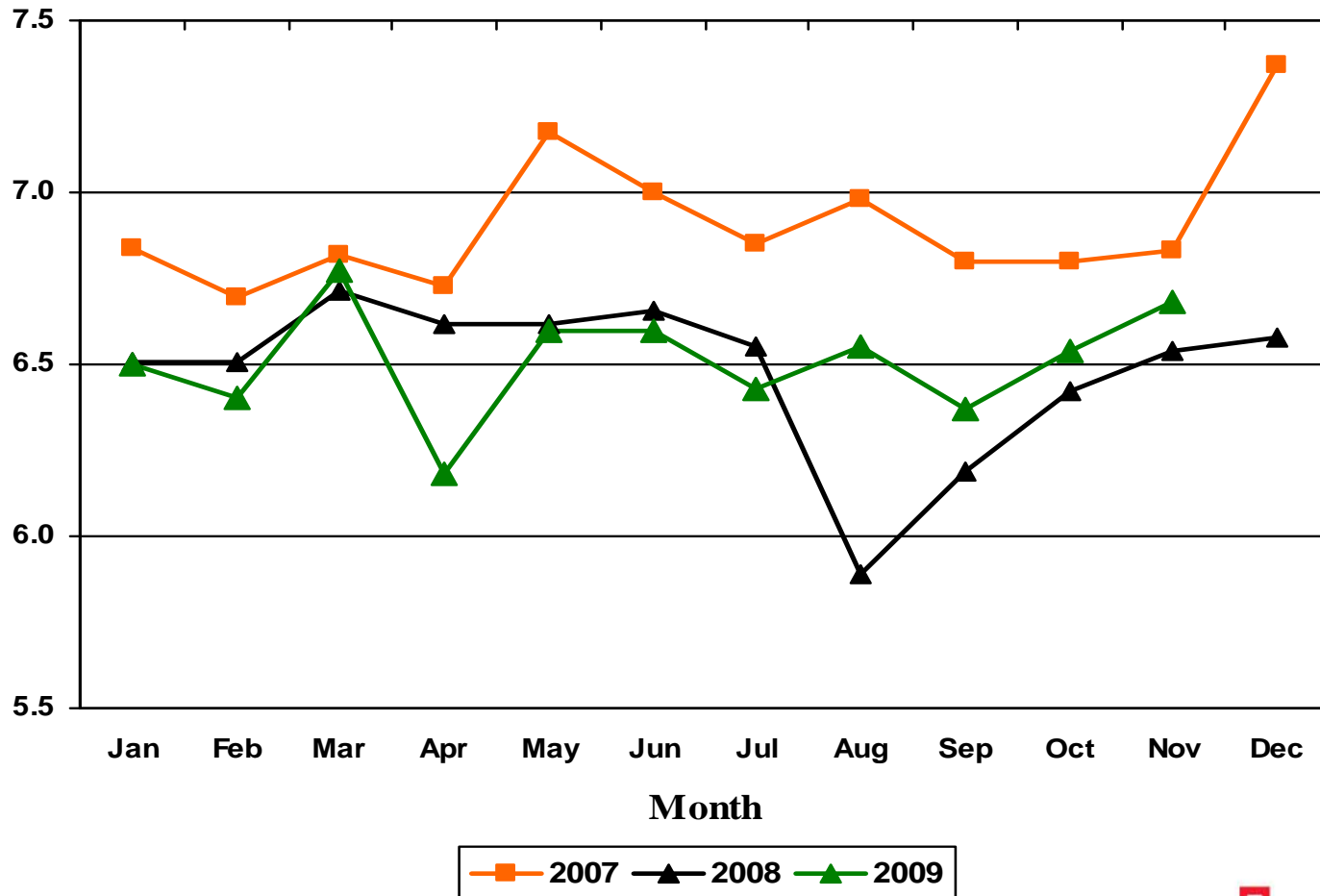
# Average Daily Census



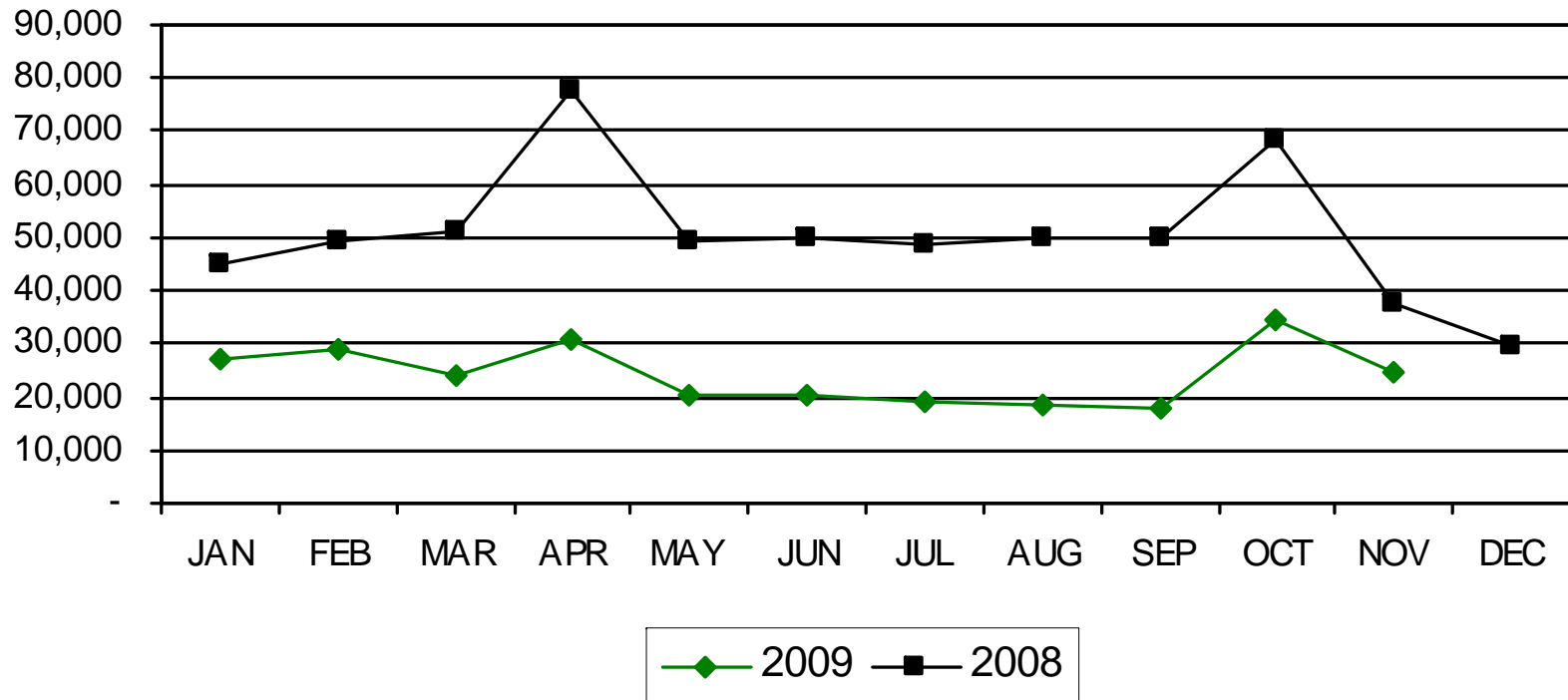
# Monthly Paid FTEs



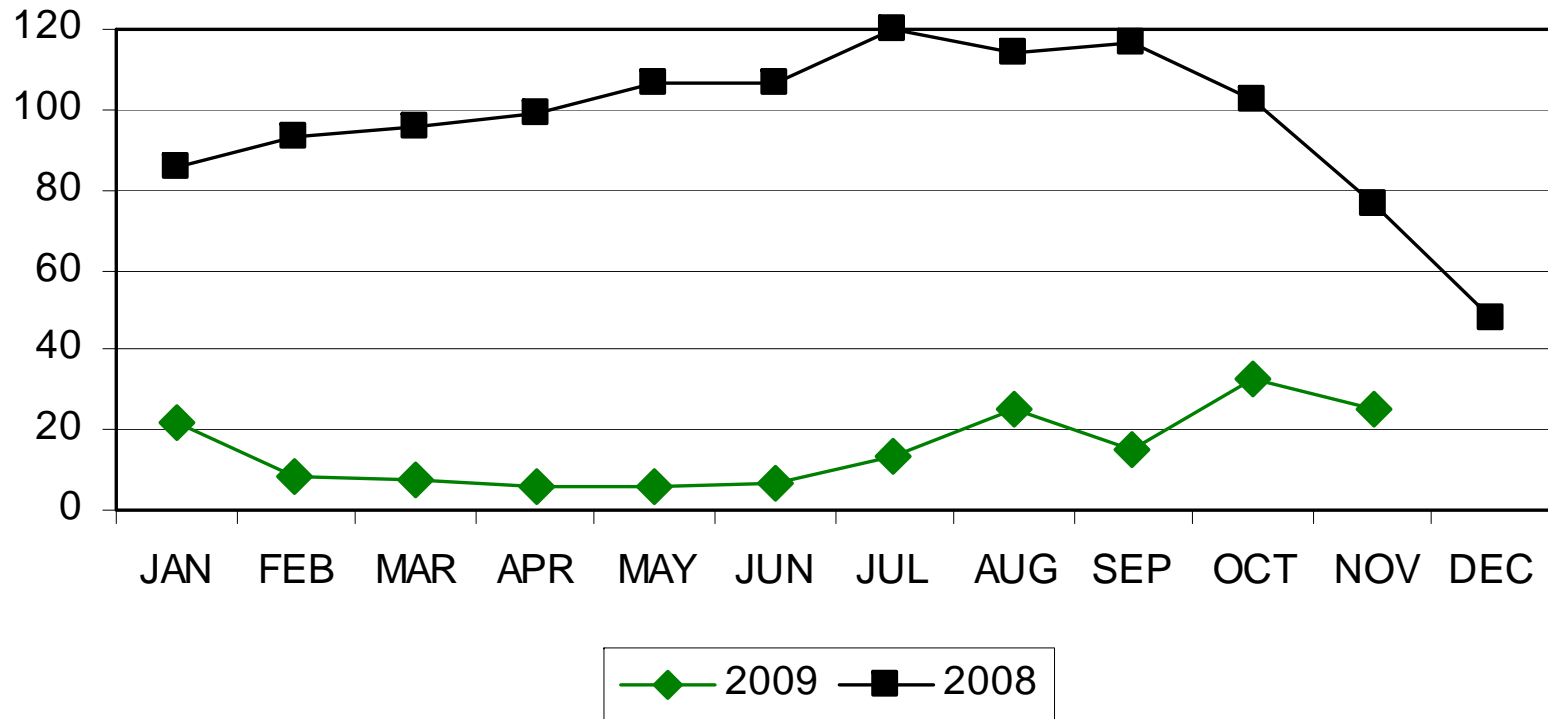
# Paid FTEs Per Adjusted Occupied Bed



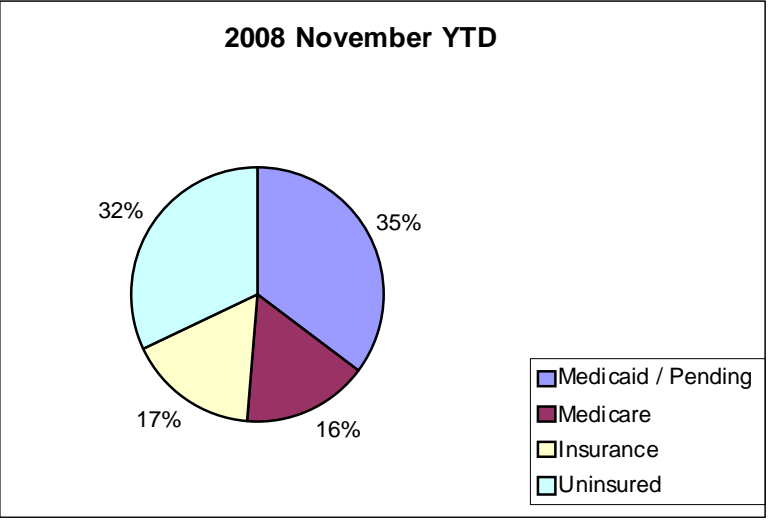
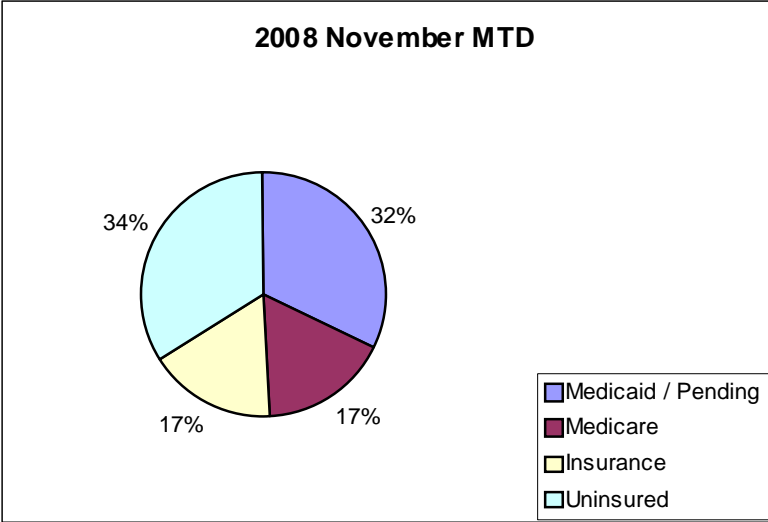
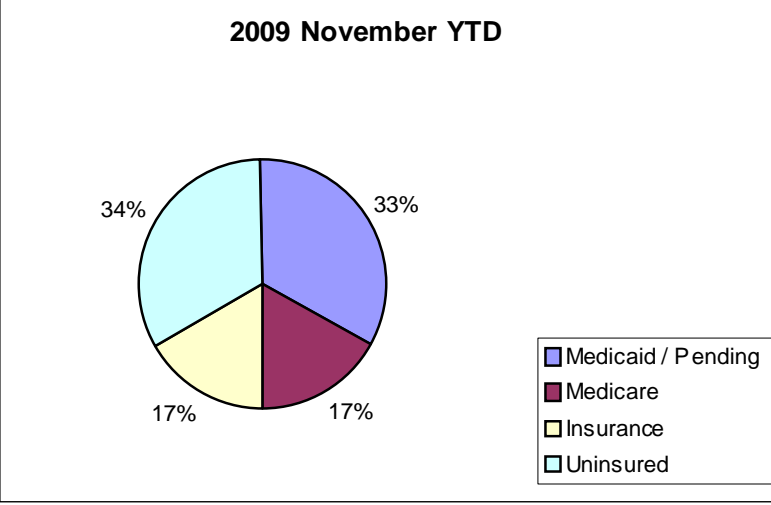
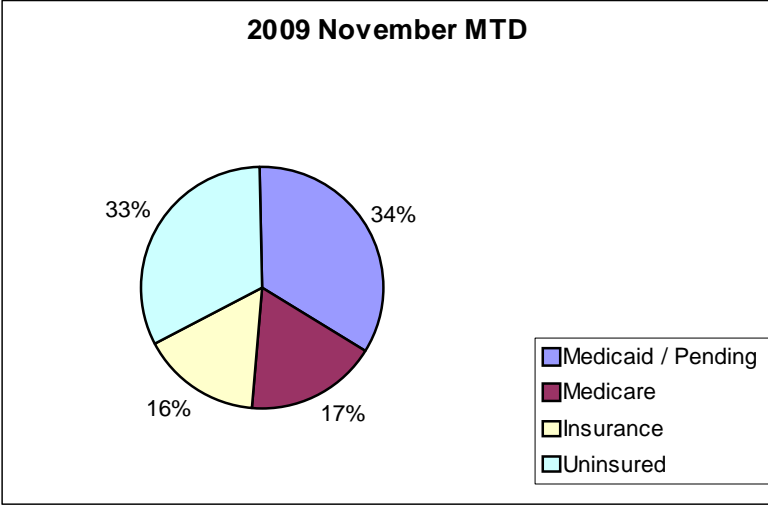
# Monthly Overtime Hours



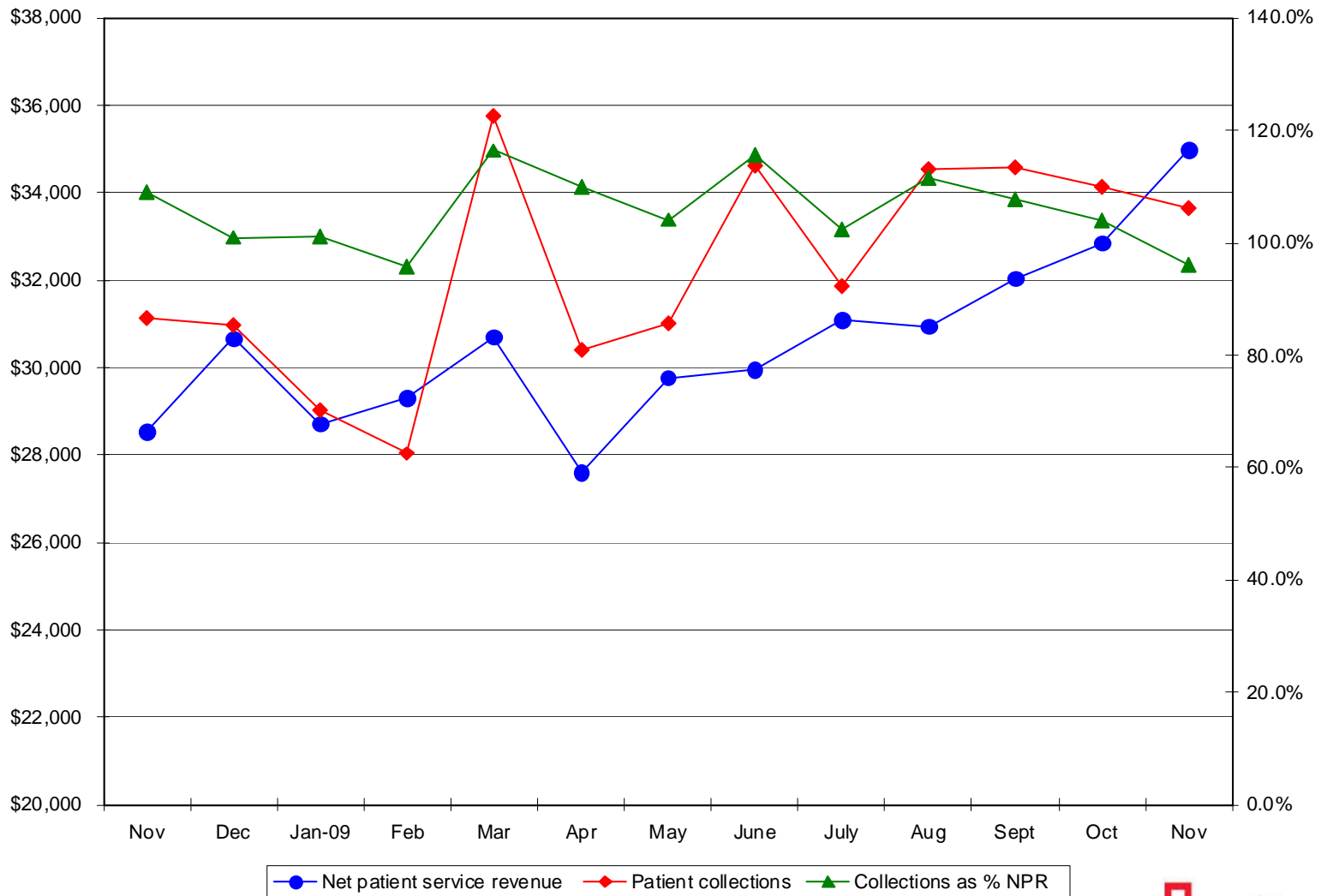
# Agency FTEs by Month



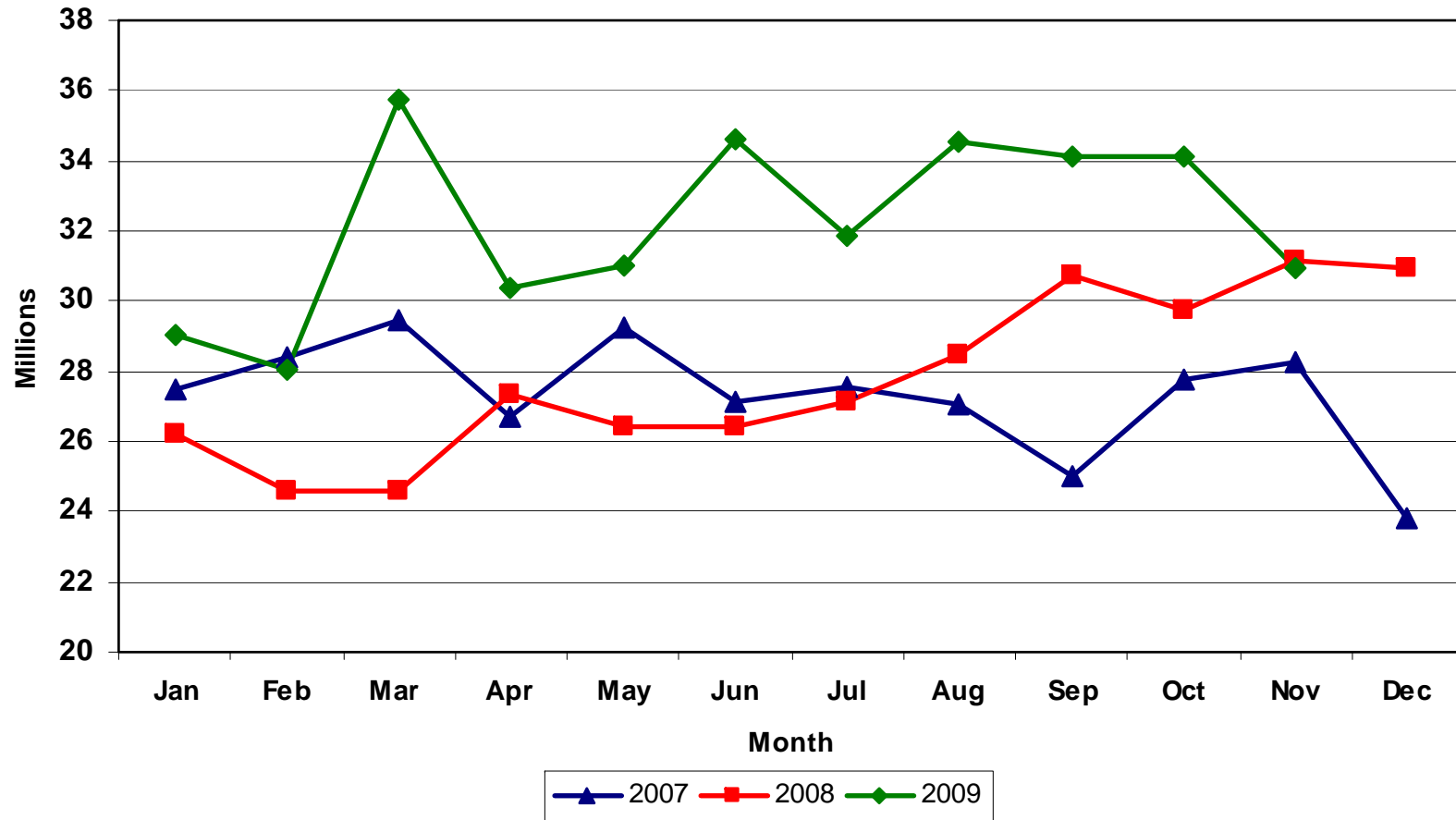
# Payor Mix



# Cash to Net Revenue Trends

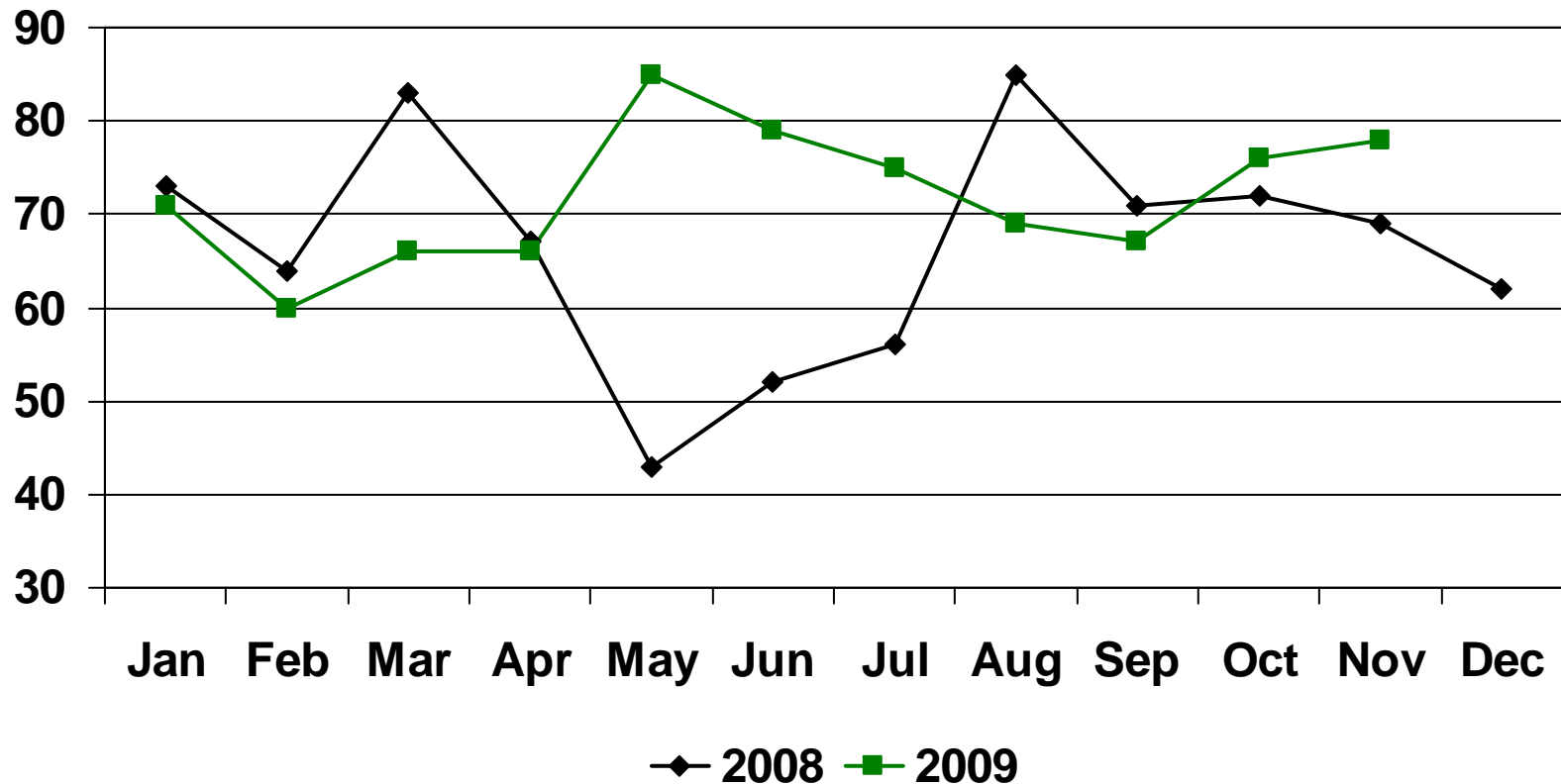


# Cash Collection by Month

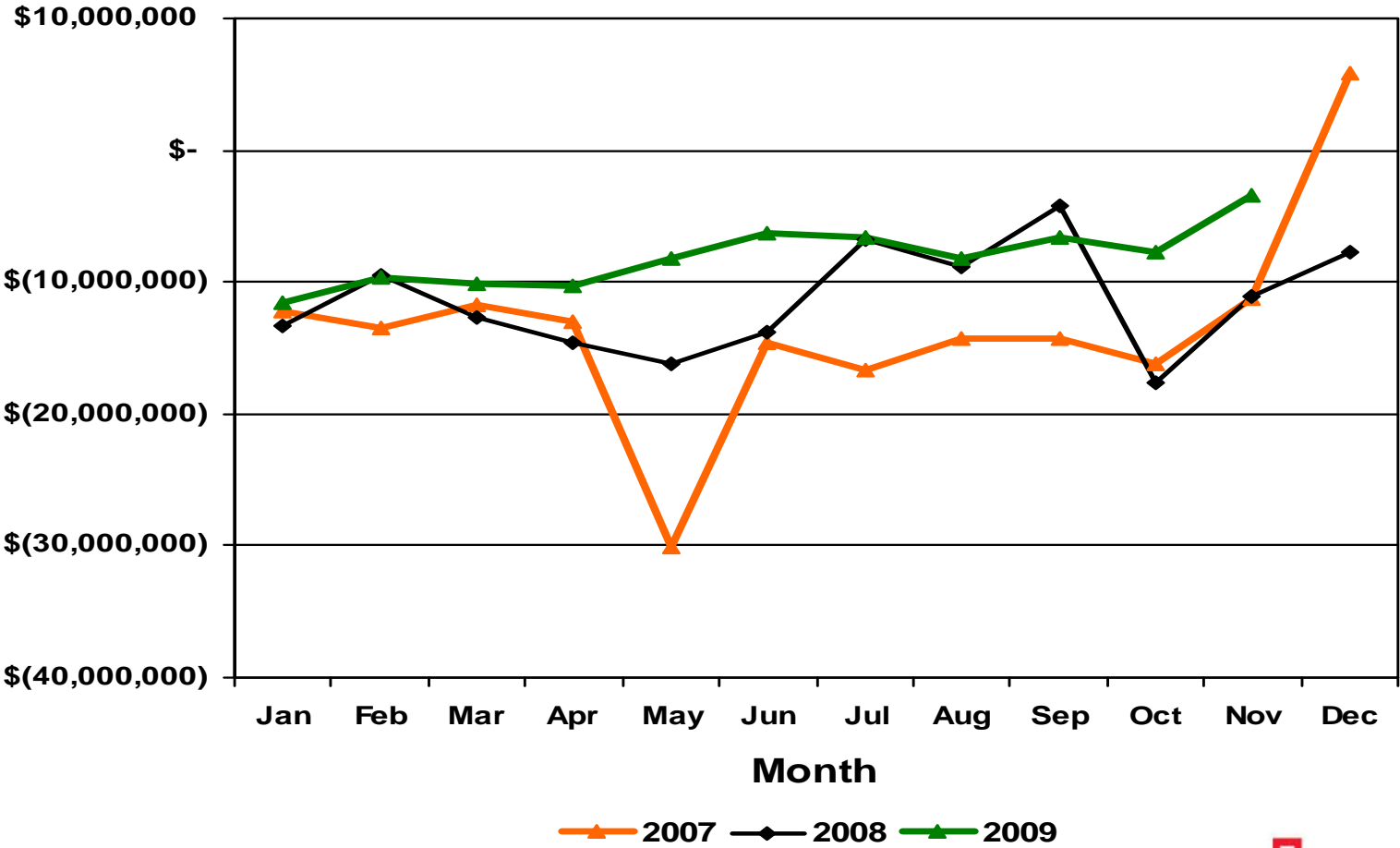


# Outstanding Days in Payables

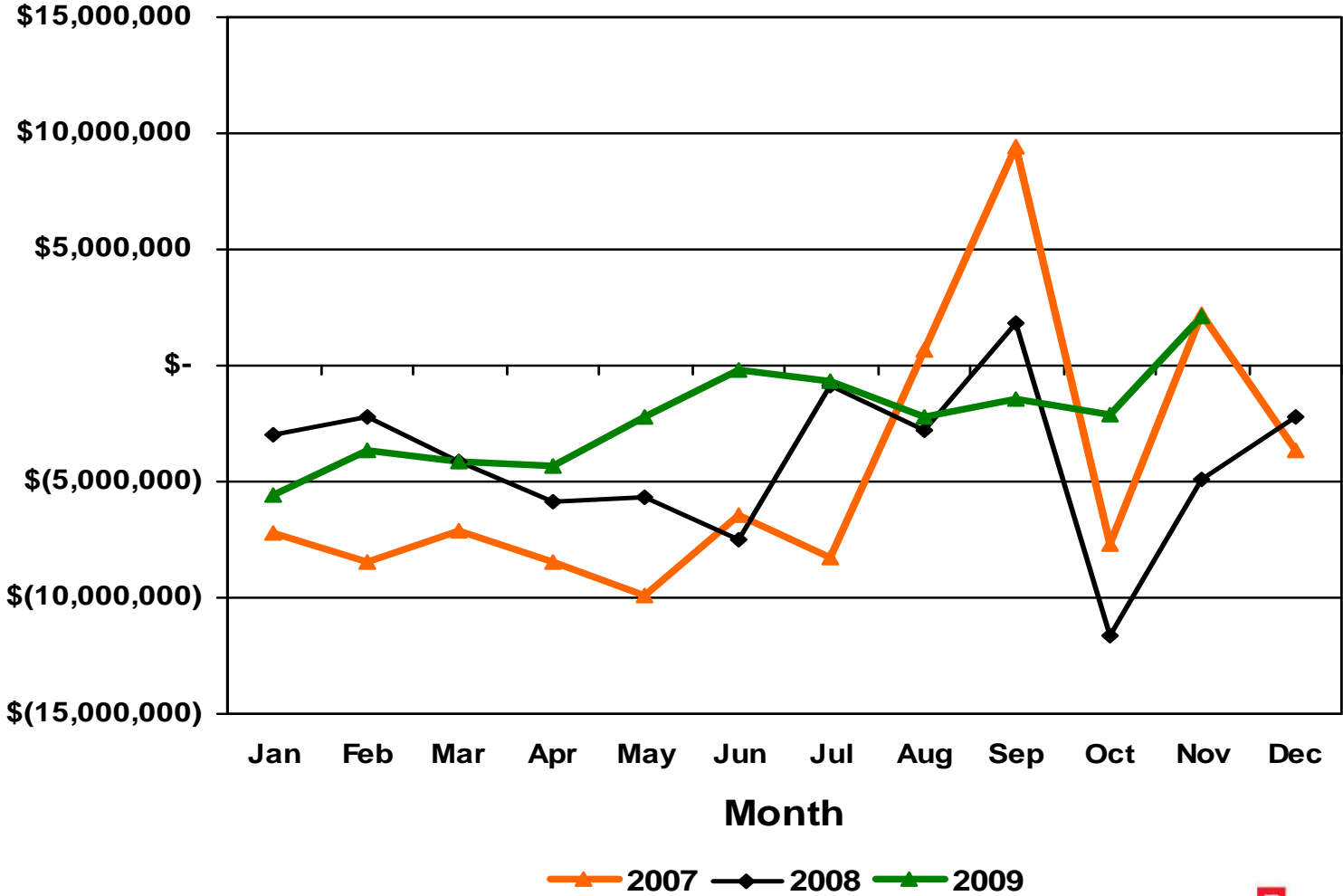
excluding certain balances



# Operating Loss before County Contributions



# Operating Margin



# Statement of Operations – Consolidated

For the month ending: November 30, 2009 (\$millions)

	2009 MTD	2009 Budget	2008 MTD	Pr Yr Variance
Net Patient Service Revenue	\$ 35.0	31.7	28.5	6.4
ICTF	6.0	6.0	6.0	0.0
Grant & Other Revenue	6.7	6.0	5.7	1.0
Total Operating Revenue	<u>47.7</u>	<u>43.7</u>	<u>40.3</u>	<u>7.4</u>
Operating Expenses	51.1	52.2	53.0	1.9
Contribution Expense	0.4	0.4	0.4	0.0
Margin before County Support	<u>-3.8</u>	<u>-8.9</u>	<u>-13.1</u>	<u>9.3</u>
County Contributions	5.9	6.3	6.4	-0.5
Operating Margin	2.1	-2.6	-6.7	8.8
Nonoperating Income	0.1	0.2	1.7	-1.6
Excess / Shortfall	<u>2.2</u>	<u>-2.4</u>	<u>-5.0</u>	<u>7.3</u>



# Statement of Operations – Consolidated

For the YTD period ending: November 30, 2009 (\$millions)

	2009 YTD	2009 Budget	2008 YTD	Pr Yr Variance
Net Patient Service Revenue	\$ 338.0	367.2	302.7	35.3
ICTF	66.3	66.3	66.3	0.0
Grant & Other Revenue	76.8	65.8	81.5	-4.7
Total Operating Revenue	<u>481.1</u>	<u>499.3</u>	<u>450.5</u>	<u>30.6</u>
Operating Expenses	570.0	594.1	586.3	16.2
Contribution Expense	-4.1	-4.2	-3.1	-1.0
Margin before County Support	<u>-93.0</u>	<u>-99.0</u>	<u>-138.9</u>	<u>45.8</u>
County Contributions	68.7	69.2	83.9	-15.2
Operating Margin	-24.4	-29.8	-54.9	30.6
Nonoperating Income	32.4	2.3	20.0	12.4
Excess / Shortfall	<u>8.1</u>	<u>-27.4</u>	<u>-35.0</u>	<u>43.0</u>



# Cash Flow Summary

For the YTD period ending: November 30, 2009 (\$millions)

	2009 YTD	2008 YTD	Variance
Operating:			
Net asset change excl County	\$ -45.4	121.4	-166.8
County Support	68.7	84.0	-15.3
County (Receivable)/Advance	-16.5	5.7	-22.2
Depreciation	34.6	28.3	6.3
Other changes assets/liabilities	-24.8	-40.1	15.3
Cash from operating activity	<u>16.5</u>	<u>199.2</u>	<u>-182.6</u>
Investing:			
Capital acquisitions	-78.8	-26.3	-52.5
Assets whose use is limited	0.0	0.0	0.0
Cash from investing activity	<u>-78.8</u>	<u>-26.3</u>	<u>-52.5</u>
Financing:			
Line of credit borrowing	30.0	0.0	30.0
Repayment of debt	-3.0	-235.3	232.2
Capital contributions	69.6	10.6	59.0
Cash from financing activity	<u>96.6</u>	<u>-224.7</u>	<u>321.3</u>
Net change in cash	<u>34.3</u>	<u>-51.9</u>	<u>86.2</u>

